

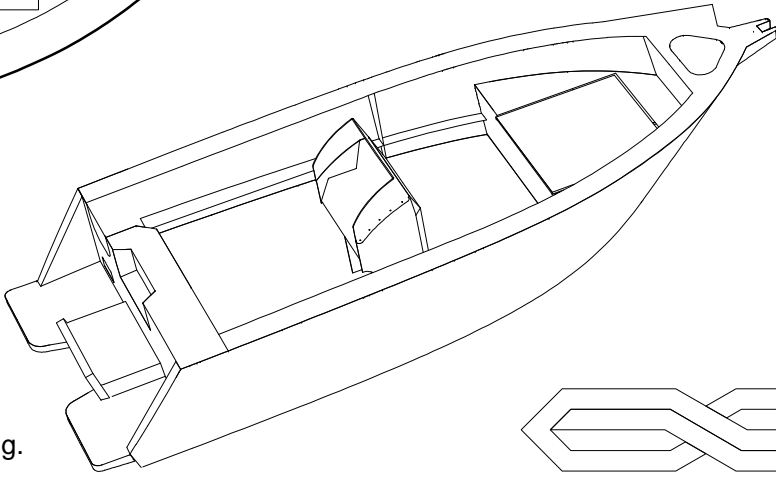
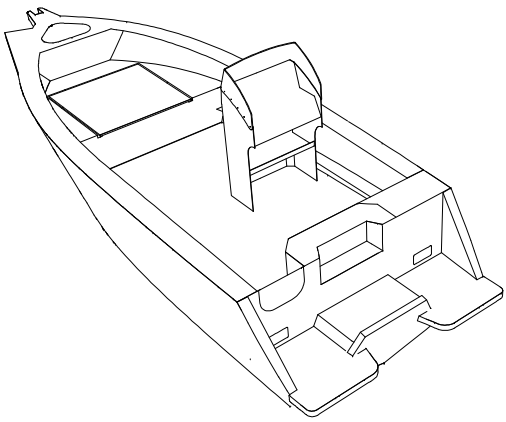
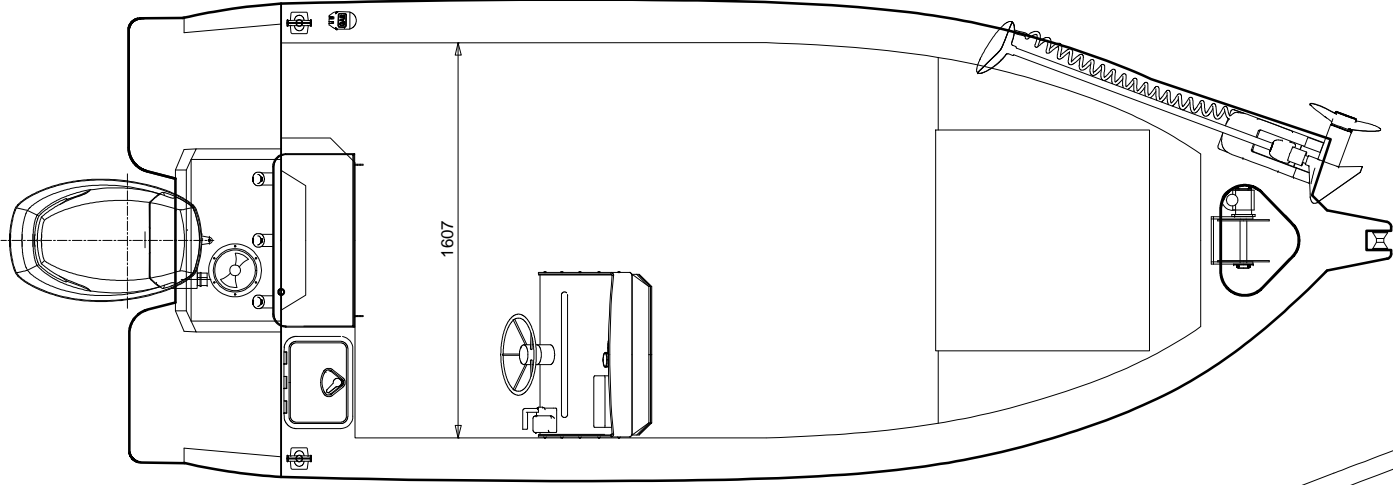
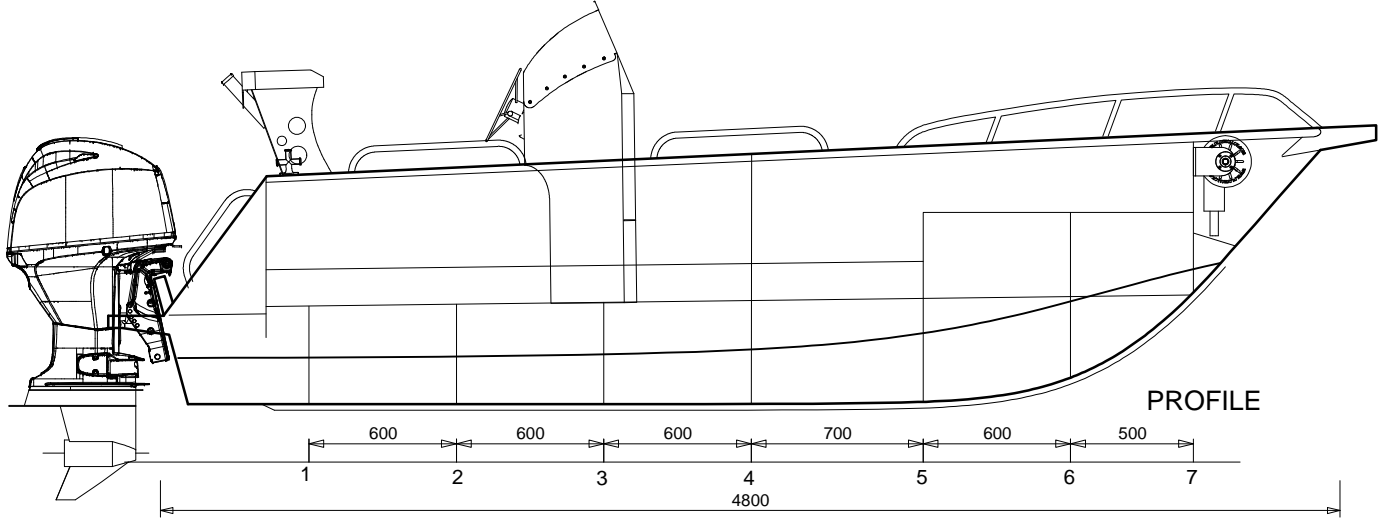
4.83m Side Console

GENERAL ARRANGEMENT

PRINCIPAL PARTICULARS

LOA:	5.16 m
LENGTH:	4.80 m
BEAM:	2.0 m
DEPTH:	1.1 m
DRAFT:	0.23m (HULL)
D/RISE:	15° @ TRAN.
DISPL:	680kg DRY -w- 70HP
ENG:	20" (LONG)

BOAT HULL TO BE FOAM FILLED.



www.platealloy.com

AUSTRALIAN BUILDERS PLATE

BUILDER "YOUR NAME"

HIN AU- "SEE REGISTRATION"

Max \uparrow = 90 hp

Max \uparrow = 270 kg

Max \uparrow 4 = 360 kg

Max \uparrow + \uparrow + \square = 590 kg

Buoyancy BASIC Flotation

⚠ Alteration of the boat's hull or permanent fittings may invalidate the particulars on this plate.

A REDUCTION IN MAXIMUM NUMBER OF PERSONS MUST BE MADE IN ADVERSE WEATHER CONDITIONS OR WHEN ON THE OPENSEA.

- Design in compliance with AS1799-1 2009
- Structure in accordance with ISO 12215
- Entire kit 4mm 5083 aluminium.
- Builders plate, Jig, Drawings & Photo CD included with kit.
- Bollards, Scuppers, Inspection port & Drain plug included in the kit.
- 5 days per week helpdesk available
- Customization available.
- Flotation foam & most fit out parts available, check catalogue for pricing.
- HIN number engraved in kit & and registered.



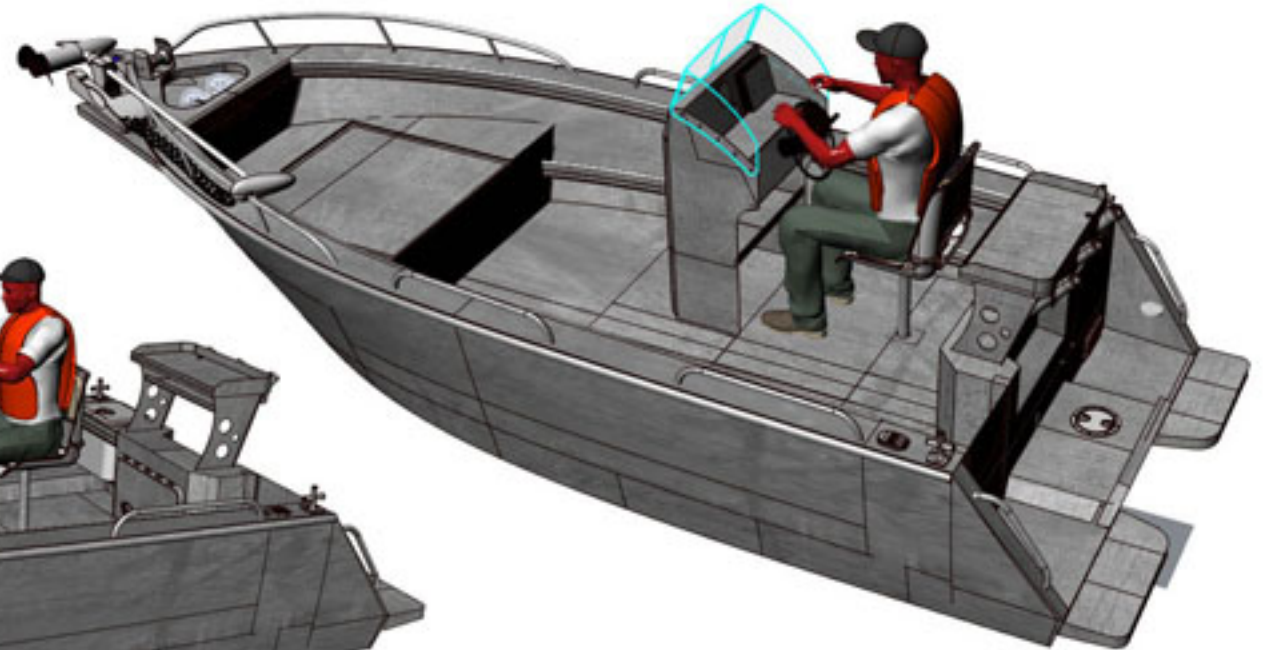
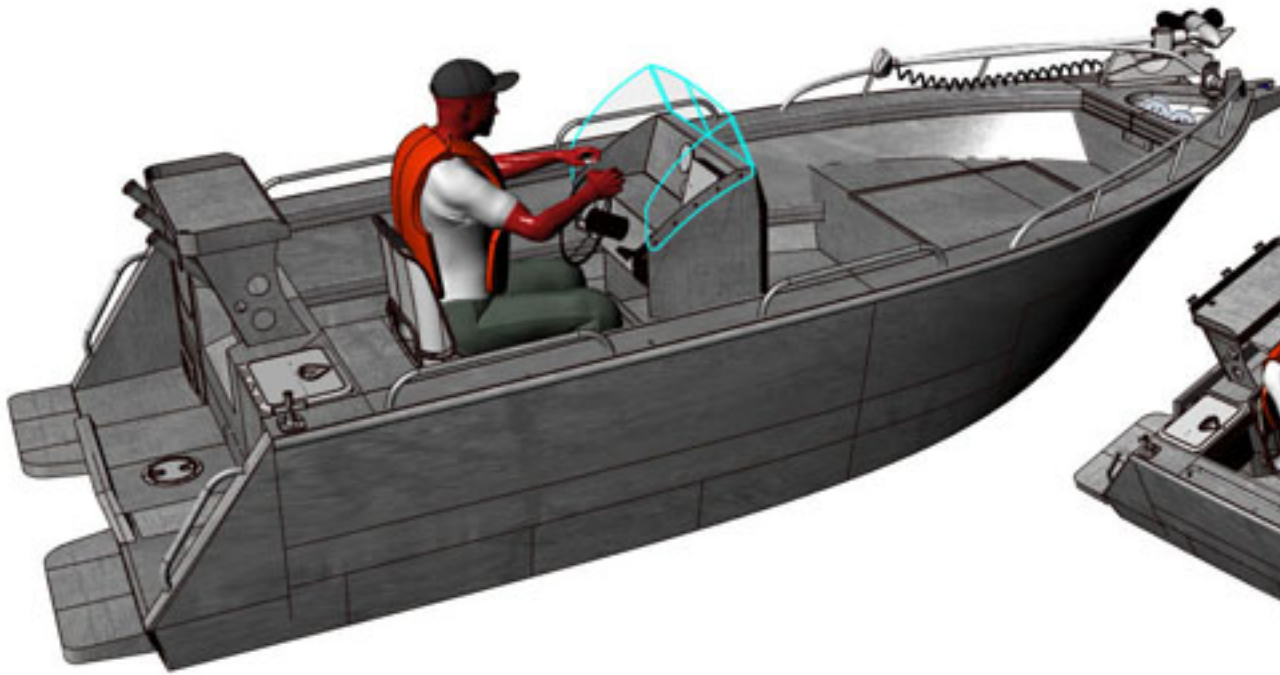
Note: Layout can be customised by owner.

4.83 Side Console



PLATE ALLOY

www.platealloy.com



Different Console Option available, Custom change include casting deck option.

4.83 Side Console



PLATE ALLOY

www.platealloy.com



Different Console Option available, Custom change include casting deck option.